



A snapshot of health care coverage and costs in Alaska

Tom Chard

Alaska Mental Health Board (AMHB)

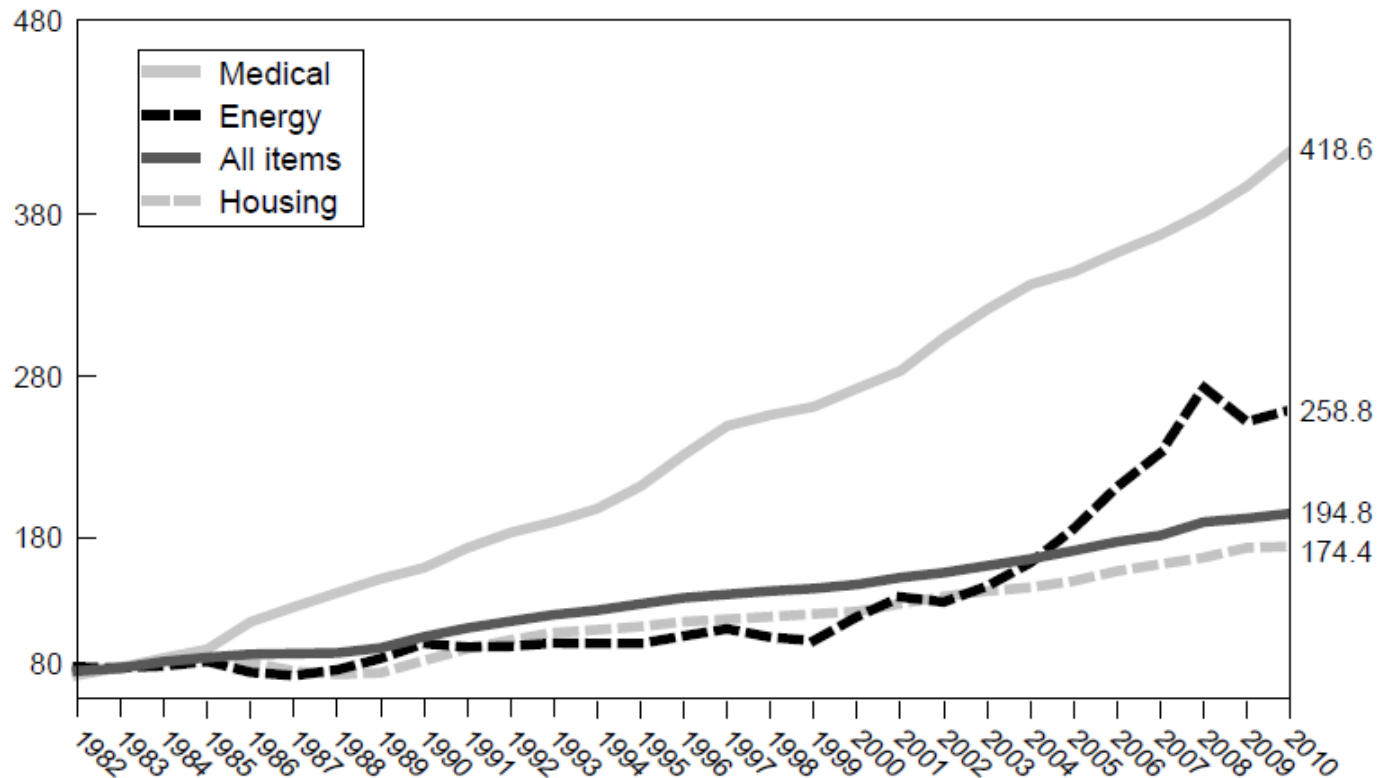
National Association of Mental Health
Planning & Advisory Councils (NAMHPAC)

September 2010

Medical Costs Continue to Increase

Medical In its Own League

Selected components of Anchorage CPI, 1982-2010



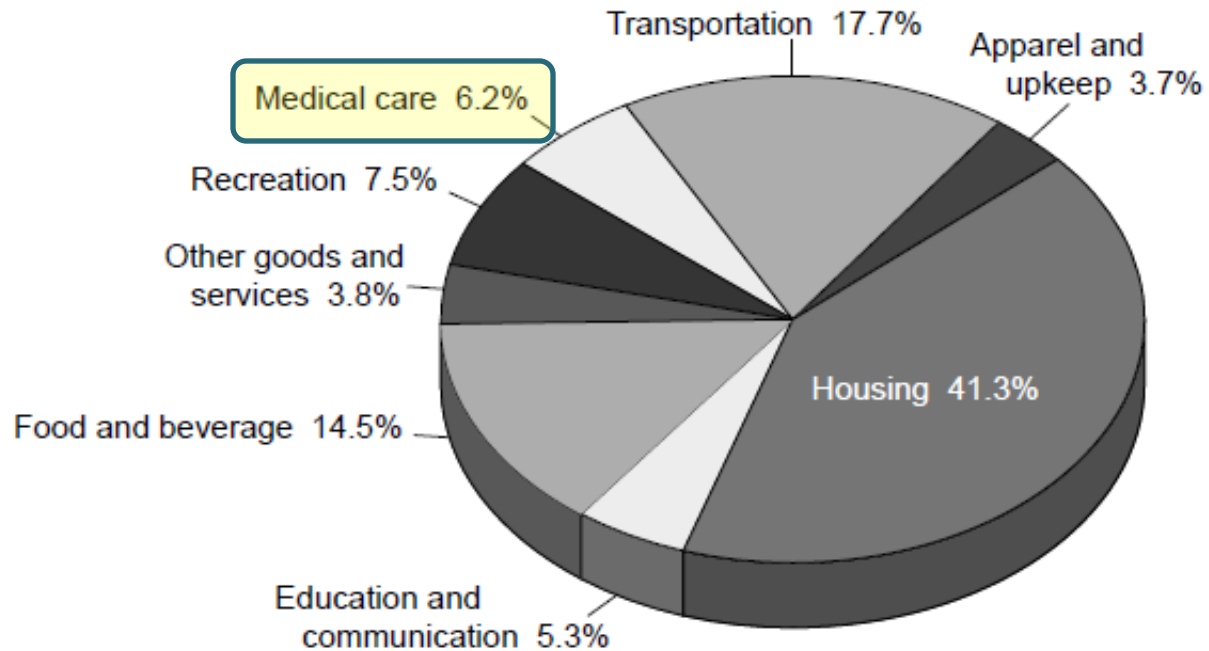
The CPI for 2010 is the percent increase in the index from the first half of 2009 to the first half of 2010. All of the other percentages are annual averages for 1982-2009.

Source: U.S. Department of Labor, Bureau of Labor Statistics

Source: Alaska Economic Trends, Aug 2010¹

Cost of Living in Alaska

CPI weighting, December 2009

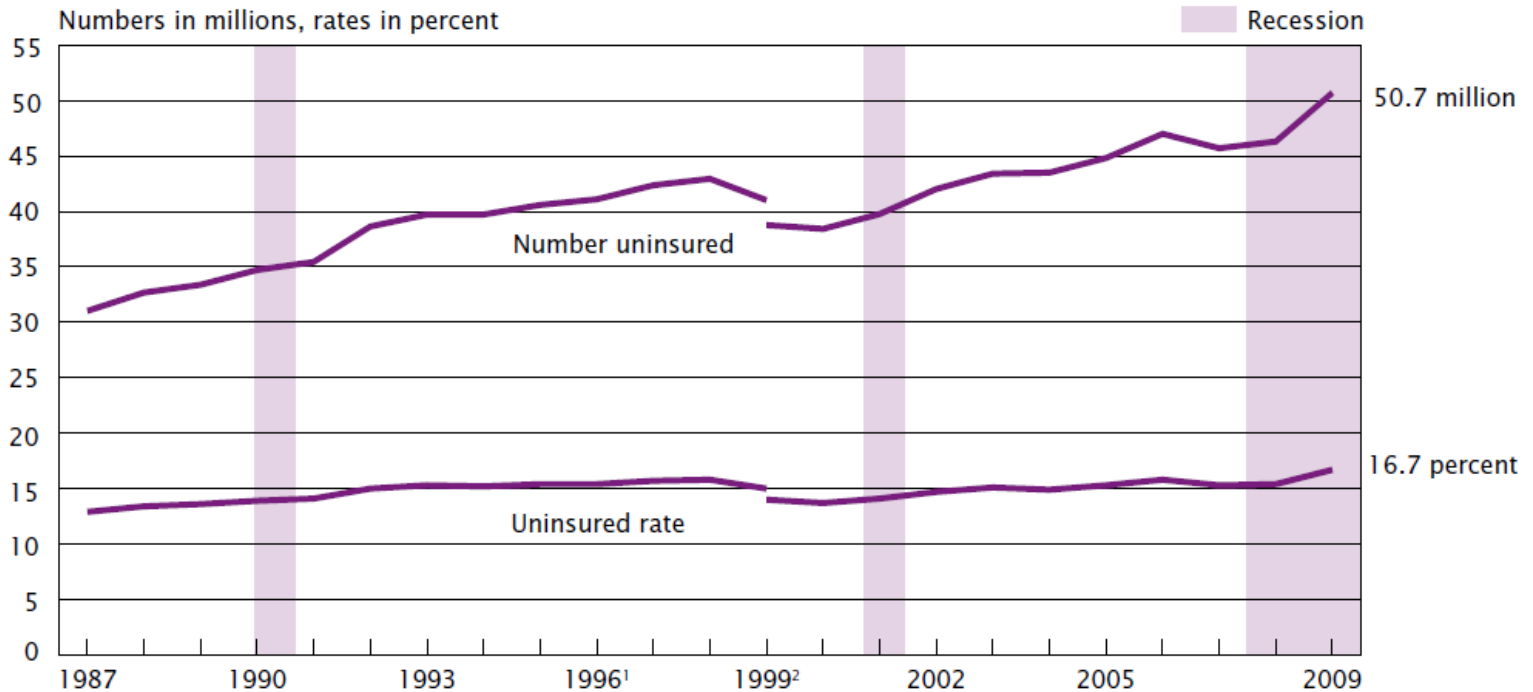


Source: U.S. Department of Labor, Bureau of Labor Statistics

Source: Alaska Economic Trends, Aug 2010¹

Uninsured – National Estimates²

Number Uninsured and Uninsured Rate: 1987 to 2009



¹ The data for 1996 through 2003 were revised using an approximation method for consistency with the revision to the 2004 and 2005 estimates.

² Implementation of Census 2000-based population controls occurred for the 2000 ASEC, which collected data for 1999. These estimates also reflect the results of follow-up verification questions, which were asked of people who responded "no" to all questions about specific types of health insurance coverage in order to verify whether they were actually uninsured. This change increased the number and percentage of people covered by health insurance, bringing the CPS more in line with estimates from other national surveys.

Notes: Respondents were not asked detailed health insurance questions before the 1988 CPS.

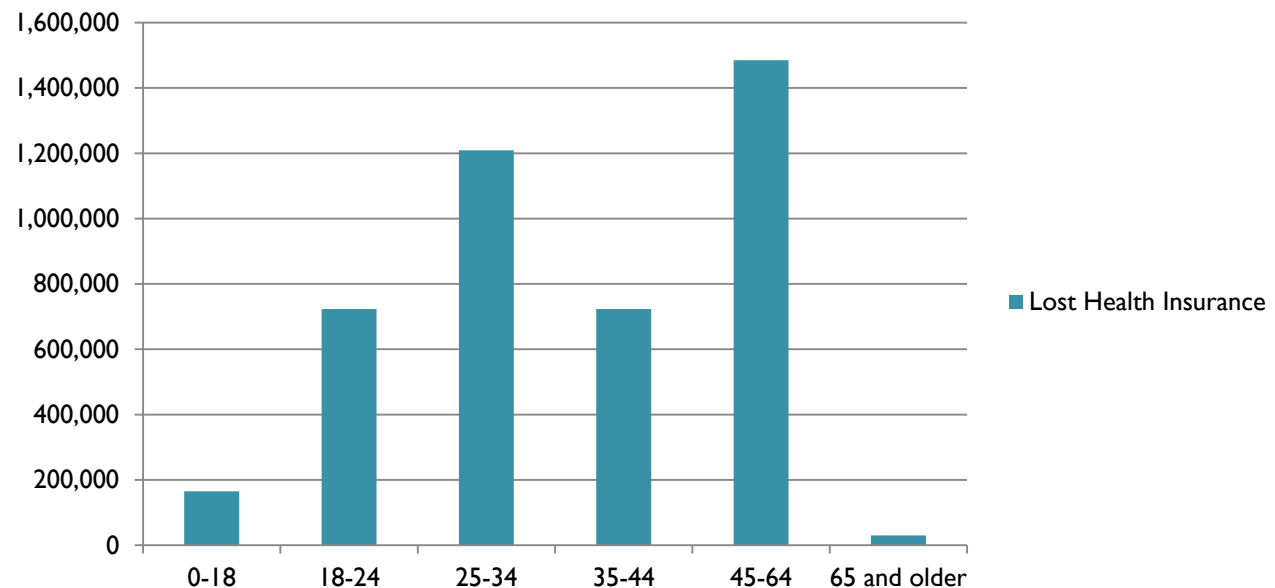
The data points are placed at the midpoints of the respective years. For information on recessions, see Appendix A.

Source: U.S. Census Bureau, Current Population Survey, 1988 to 2010 Annual Social and Economic Supplements.

Who is uninsured? 2008 to 2009 changes³

4 million people lost insurance coverage in the U.S..

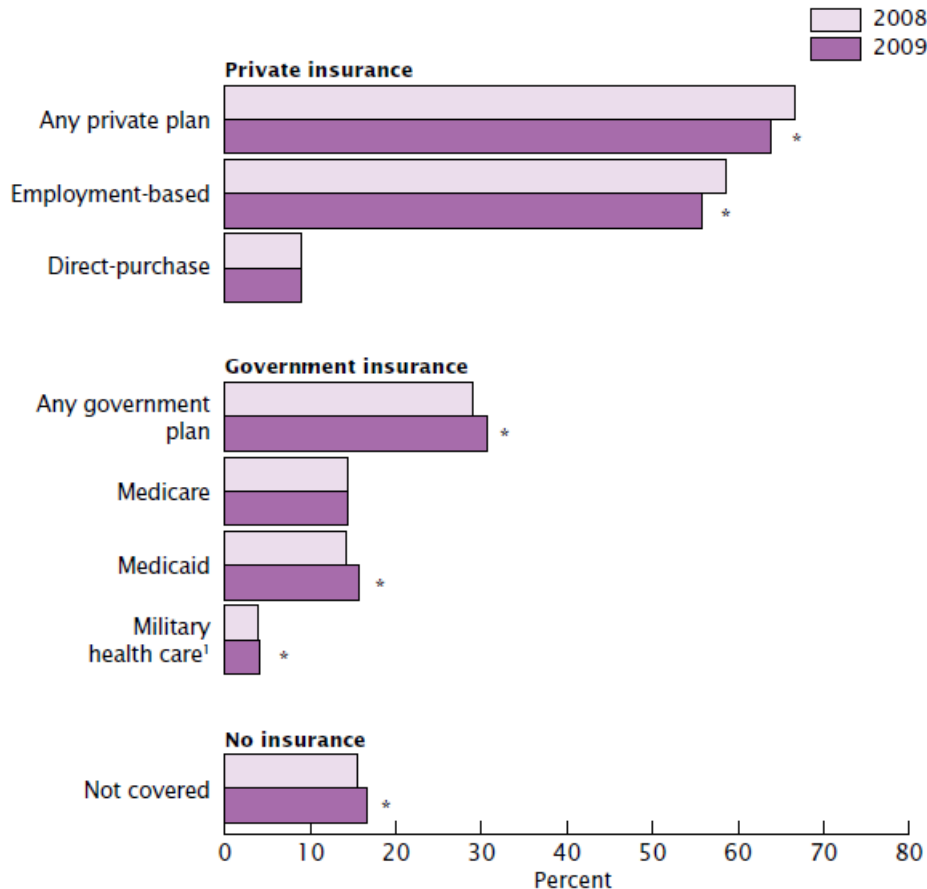
Change in the Number of People Without Health Insurance Coverage 2008-2009



Source: Table 8. U.S. Census Bureau, Current Population Survey, 2009 and 2010 Annual Social and Economic Supplements. (pg. 23)³

How are people insured?²

Coverage by Type of Health Insurance: 2008 and 2009



Despite that most people are covered by an employer-based plan (55.8% in 2009), according to the US Census Bureau, this is the lowest rate since 1987 (the first year data were collected).

* Statistically different at the 90 percent confidence level.

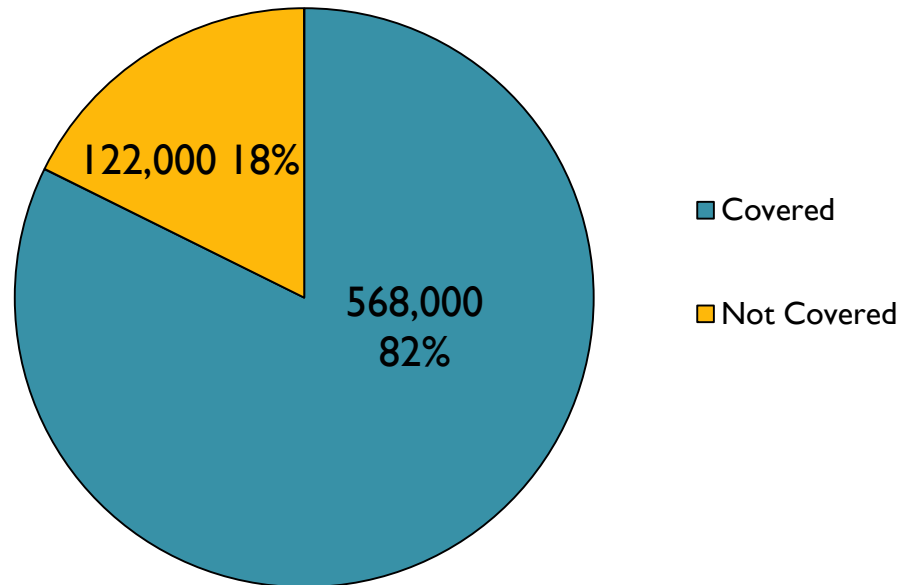
¹ Military health care includes Tricare and CHAMPVA (Civilian Health and Medical Program of the Department of Veterans Affairs), as well as care provided by the Department of Veterans Affairs and the military.

Note: The estimates by type of coverage are not mutually exclusive; people can be covered by more than one type of health insurance during the year.

Source: U.S. Census Bureau, Current Population Survey, 2009 and 2010 Annual Social and Economic Supplements.

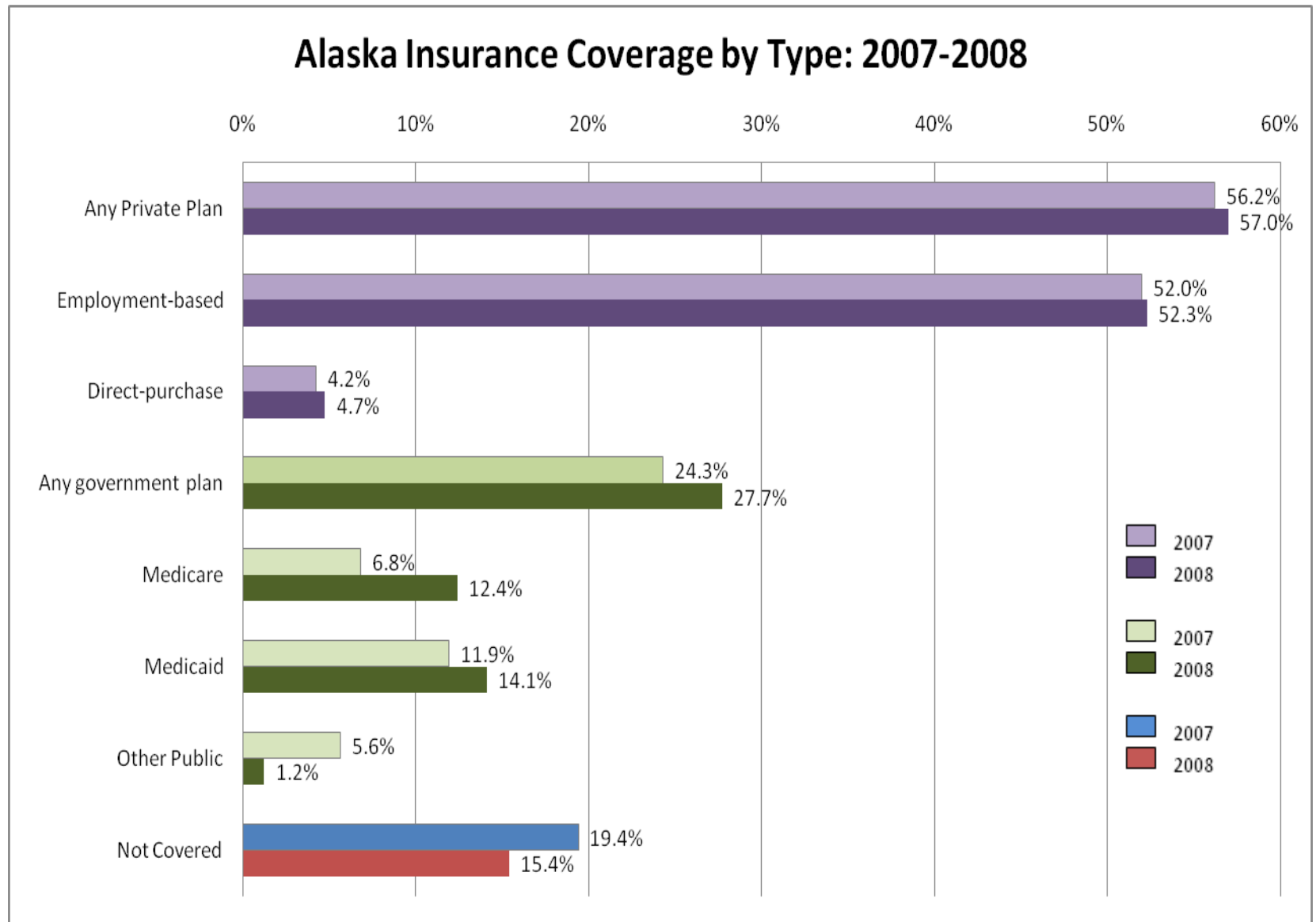
Uninsured – State Estimates⁴

Health Insurance Coverage Status in Alaska: 2009 Estimates



Source: U.S. Census Bureau, Current Population Survey, 2010 Annual Social and Economic Supplement.

How are people insured in Alaska?⁵



Source: Kaiser Family Foundation data. Available online at: <http://www.statehealthfacts.org/mfs.jsp?rgn=3&rgn=1>

ACHIA - Alaska Comprehensive Health Insurance Association



ACHIA

A L A S K A
C O M P R E H E N S I V E
H E A L T H I N S U R A N C E
A S S O C I A T I O N

- Created by the Alaska State Legislature in 1992 to provide access to health insurance coverage to all residents of the state who are unable to obtain individual health insurance.
- At the end of 2008, 469 policies were in force.⁶
- ACHIA-FED
A temporary insurance pool created by Federal Health Reform for Alaskans without health insurance coverage with a pre-existing condition.⁷

References:

1. Alaska Department of Labor and Workforce Development. Alaska Economic Trends: *The Cost of Living in Alaska*. Aug 2010. Available online at: <http://labor.alaska.gov/trends/aug10.pdf>
2. DeNavas-Walt, Carmen, Bernadette D. Proctor, and Jessica C. Smith, U.S. Census Bureau, Current Population Reports, P60-238, Income, Poverty, and Health Insurance Coverage in the United States: 2009, U.S. Government Printing Office, Washington, DC, 2010.
3. United States Census Bureau: Coverage by Type of Health Insurance: 2008 and 2009. Figure 8. (pg. 25). Available online at: <http://www.census.gov/prod/2010pubs/p60-238.pdf>
4. US Census Bureau: Table HI06. Health Insurance Coverage Status by State for All People: 2009. Available online at: http://www.census.gov/hhes/www/cpstables/032010/health/h06_000.htm (data based on U.S. Census Bureau, Current Population Survey, 2010 Annual Social and Economic Supplement.)
5. Kaiser Family Foundation. *Distribution by Insurance Status, 2007-2008*. Available online at: <http://www.statehealthfacts.org/mfs.jsp?rgn=3&rgn=1>
6. Alaska Comprehensive Health Insurance Association (ACHIA): Annual Report January 1, 2008 – December 31, 2008. (pg. 4) Available online at: <http://www.achia.com/docs/2008%20Annual%20Report%20-%20Final%209%2030%2009.pdf>
7. Alaska Comprehensive Health Insurance Association (ACHIA): ACHIA-FED information available online at: <http://www.achia.com/ACHIA-FED/default.htm>